

Kurnalpi Nickel Project Drilling Update

- RC drilling to test a strong off-hole EM conductor, gossan and disseminated nickel sulphides to commence first week of August 2018

Mithril Resources Ltd (the “Company” - **MTH.AX**) advises that a Reverse Circulation drilling program to test a strong off hole EM conductor at its 100% owned Kurnalpi Nickel Project (located 70 kms north east of Kalgoorlie, WA - Figures 1) is scheduled to commence during the first week of August 2018.

Drilling undertaken by Mithril at the northern end of the project (in March 2018) confirmed the presence of nickel sulphide mineralisation with a 4-metre zone of gossanous weathered ultramafic and several other narrow intervals of disseminated nickel sulphide mineralisation intersected beneath a flat-lying zone of near-surface nickel - cobalt mineralisation.

Subsequent downhole EM geophysical surveying identified a strong off hole conductor lying adjacent to the sulphide mineralisation at approximately 150 metres depth (See ASX Announcement dated 20 April 2017).

The strength of the conductor is consistent with what could be expected from semi to massive sulphides and given its proximity to existing nickel sulphide mineralisation is a high priority drill target.

Up to three Reverse Circulation holes (750 metres in total) will be drilled as an initial test of the EM conductor, gossan and disseminated sulphide intercepts.

Statutory approvals to conduct the work have been received and Mithril will provide further updates when drilling commences.

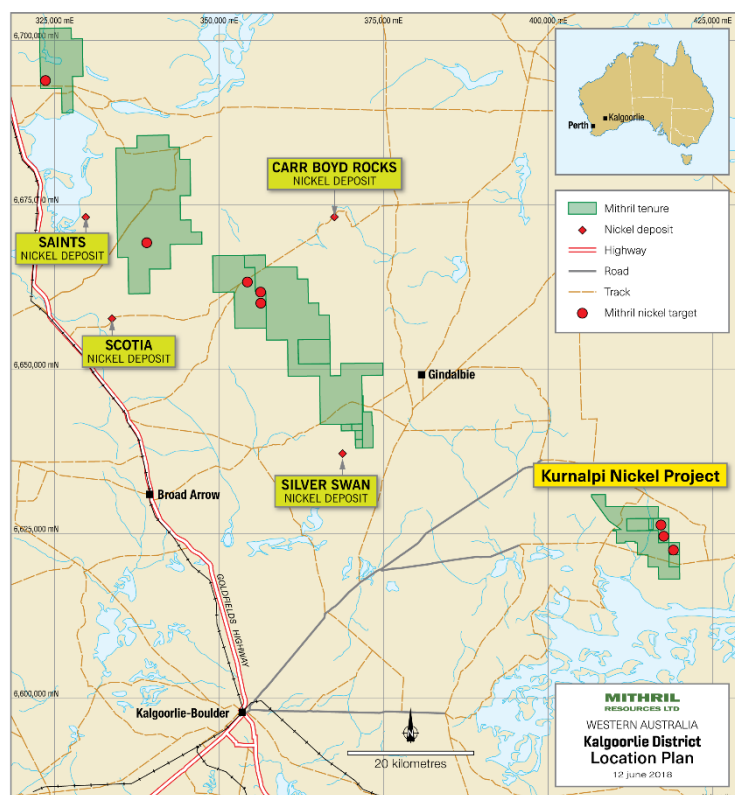


Figure 1: Project Location Plan

ENDS

For Further Information Contact:

Mithril Resources Ltd
David Hutton, Managing Director
admin@mithrilresources.com.au

22B Beulah Road
Norwood, South Australia 5067
ABN: 30 099 883 922
T: (61 8) 8132 8800
F: (61 8) 8132 8899
www.mithrilresources.com.au

Competent Persons Statement:

The information in this report that relates to Exploration Targets, Exploration Results, Mineral Resources or Ore Reserves is based on information compiled by Mr David Hutton, who is a Competent Person, and a Fellow of The Australasian Institute of Mining and Metallurgy. Mr Hutton is Managing Director and a full-time employee of Mithril Resources Ltd.

Mr Hutton has sufficient experience that is relevant to the style of mineralisation and type of deposit under consideration and to the activity being undertaken to qualify as a Competent Person as defined in the 2012 Edition of the 'Australasian Code for Reporting of Exploration Results, Mineral Resources and Ore Reserves'.

Mr Hutton consents to the inclusion in the report of the matters based on his information in the form and context in which it appears.

About Mithril Resources Ltd:

Mithril Resources is an Australian resources company whose objective is the creation of shareholder wealth through the discovery and development of mineral deposits.

Mithril are exploring for a range of high-value commodities (principally nickel, cobalt, copper and zinc) throughout the Meekatharra, West Kimberley and Kalgoorlie Districts of Western Australia.

The Company is also exploring South Australia's far western Coompana Province for magmatic nickel – copper deposits with OZ Minerals Limited.

Figure 3: Kurnalpi Project magnetic image showing areas for ground EM and initial drilling, existing drill hole collar locations (colour coded by maximum downhole % nickel), and key drill intercepts.